

## Quick View Version 1.0

(On-Line Help)

How to?

Buttons

Menu Commands

### **How to Mark the Text**

To mark part of text in the Main Window ( e.g. to transfer it to other file ), just click right mouse button at the beginning of text fragment and than click at the end of fragment. You can perform any operation with QuickView and other applications between these clicks.Fig 1-1.

## **Scroll the Text**

For scroll, text use the Up , Down , PageUp, PageDown ,End and Home keys

## **Changing active window**

You can use the Ctl-Tab to switch the active window, window when window become active you can see the carret ( in the List of files or in the List of directories) or hair border ( around the main window).

## **How to Do**

### Mouse Operations

Select a Text

### Keyboard Operations

Scroll the Text

Change active window

### Procedures


View only certain files.

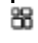
## **How to Select the part of Text**


To select part of text in the Main Window ( e.g. to transfer it to other file ), just click right mouse button at the beginning of text fragment and than click at the end of fragment. You can perform any operation with QuickView and other applications between these clicks.

## The Buttons on Toolbar


### Bitmap Operations

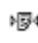
 This button performs Stretch/Shrink operation. It toggle between small and large bitmap pictures in the Main Window. If you view an Icon , and press this button the icon will be enlarged several times.(Use Stretch/Shrink command to perform this via keyboard)

 This button performs Tile operation, if you wish to choose the wall paper for windows and make the preview of bitmaps for it, you can press the tile button and see how this bitmap looks for tiled wallpaper.(Use the Tile command to perform this via keyboard)


 This button performs Invert operation, when you press this button all colours on the bitmap become negative. This button doesn't work with compressed bitmaps in this version of QuickView.(Use the Invert command to perform this via keyboard)


### Text Operations

 This button intended for search operations. (Look the 'commands' section). (Use the Search command to perform this via keyboard)


 This button performs the Line Wrap command.It allow you to view the texts with line larger than Qview window, the right parts of lines will be moved to the next lines. ( This command not change the contents of the file).(Use the Wrap command to perform this via keyboard)

### Calling Applications

 This button calls the application wich can work with currently viedwed file and the application opens this file. ( This application must be installed in your system, and must be compatible with Windows 3.1 shell convention). If there isn't application for current file installed in your system, nothing happens ( Use the Open command to perform this via keyboard)


 This button the same as the previous, but the application will print the currently viewed file.( Use the print command to perform this via keyboard)

## Open

 This command calls the application which can work with currently viewed file and the application opens this file. ( This application must be installed in your system, and must be compatible with Windows 3.1 shell convention). If there isn't application for current file installed in your system, nothing happens ( Use the Open command to perform this via keyboard)



## Print

 This comand the same as the open, but the application will print the currently viewed file.( Use the print command to perform this via keyboard)

## The Menu commands

### File Menu:

New Mask

Open

Print

Rename/Move

Copy

Delete

About

Quit

### Transfer

Copy Page

Copy Selection

Clear Selection

### Bitmap

Stretch/Shrink

Tile

Invert

### Text

Search

Continue

Line Wrap

### View

The View Menu commands

### Options

Options Dialog

## New Mask

. This command allows you to choose what files you want to see in the files list. When you select this command you will see the dialogue box as on figure 1-2.

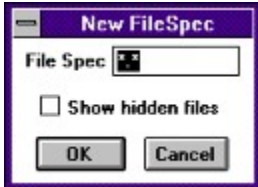


Fig 1-2

In the dialogue box you can write the DOS wildcard character for files that you want see in the list of files. If you click on 'Show Hidden Files" check box you will be able to see the hidden and system files in the "List of files". Normally those files not visible for you. (Usually this command is used for viewing the certain type of files in large directory.)

## Copy

This command allows you to copy selected source file in the files list to the destination file. When you select this command you will see the dialogue box as on figure 1-3

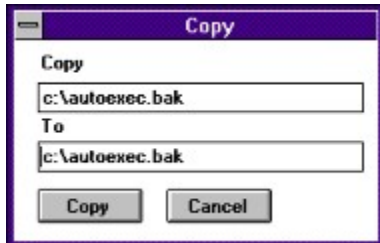


Fig 1-3

In the top box you see the source path, in the bottom box you see the destination path. Usually the source and destination path are the full paths to currently selected file. You can change any of these paths and press "Copy". (Wildcards are not allowed in the current version of QuickView).

## Ren/Move

This command allows you to rename or move selected file. When you select this command you will see the dialogue box as on figure 1-4

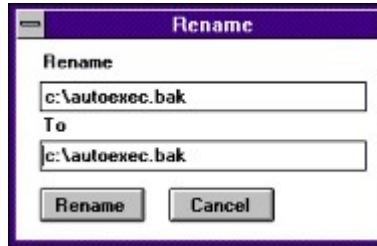


Fig 1-4

In the top box you see the source path, in the bottom box - the destination path. Usually the source and destination path are the full paths to currently selected file. You can change any of this paths and press "Rename". Wildcards are not allowed in the current version of QuickView.

## Delete

This command allows you to delete the selected file. When you select this command you will see the dialogue box as on figure 1-5.

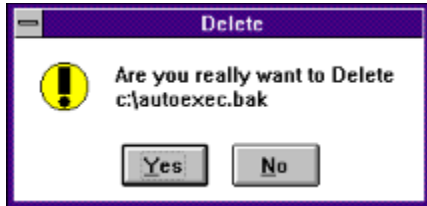


Fig 1-5

If you really want to delete selected file you press "Yes", and say good-bye to selected file. Otherwise you can press "No". If you sure enough and it's need not for you to ask confirmation every time you can suppress this Box, by using Options menu. **See Also Options**.

**Quit.**

When you want to finish working with QuickView choose this command.

# **Quick View**

(Version 1.0)  
by  
**RoyalSoftware**  
**(C)1992**

The QuickView utility designed for quick and convenient examination of different files' contents in MS Windows environment. QuickView allows to view Text and Graphics files of various formats. You can make some standard operations with files (Copy, Move, Delete, e.t.c.) and their contents (Search for text, Stretch/Shrink bitmap, e.t.c.) with help of QuickView program.



**Copy Selection:**

You can select any part of the file by clicking right mouse button at the beginning and the end of part of file you want to mark. Then you can choose Copy selection command for copying this part of file to the clipboard. (This command work only with Text and Hex viewers.)

**Copy Page:**

This is a quite complex command. It depends on Viewer. For bitmap viewer it copies all Bitmap to the clipboard. For Text viewer it copies the page to clipboard, page is 25 lines of text. For example you stay on the 115 line in the text file, when you select this command, lines from 100 to 125, will be copied to clipboard. For Hex viewer page is also 25 lines, but it always begins from top of the Window. For example if you stay on 122 line of Hex Dump and choose this command, lines 122-147 will be copied to clipboard.

**Clear Selection:**

This is very simple command. It only hides any marked block of a text in the file.

**Stretch/Shrink**

This command adjusts the Bitmap size to the size of Main Window.

**Tile**

This command repeats the small bitmap and fill the whole Main Window area. This is very useful for choosing wallpaper for Windows.

**Invert.**

This command invert all colours of bitmap. Useful for various purposes.

### **The View Menu**

All commands of this menu used for enabling and disabling parts of QuickView. If the checkmark presents aside the option this option is enabled, otherwise it is disabled.

## Options:

This command allows you to adjust Quick View for convenience. When you choose this command you will see the dialogue box as on figure 1-6

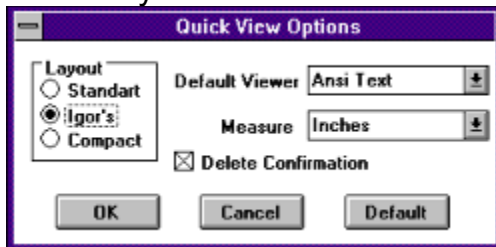


Fig 1-6

The **layout** section controls the layout of Part of QuickView. In **Standard** layout, the list of Directories and List of Files, has the full height of window and Directory list resides at left side of Window, and the List of Files, resides at right side of list of directories. In **Compact** layout : the list of directories and list of files has the half size of window and List of files resides on top and list of directories resides on bottom left corners of the window. But my friend Igor doesn't like this layout and he proposes me to swap the List of Files and List of Dirs. ( If you send to me your favourite layout I can insert it in Next Version and send it to you. ).

The **Default viewer** is the viewer of files which can't be viewed of their specific Viewer

The **measurement** is the system of units that used in the Ruler.

The **Delete confirmations** Check Box allows you to suppress the confirmation on delete operation ( See the Delete command). When it checked the QuickView always ask you when you execute the Delete command



## Search:

This command allows you to find some text in a file (work only with Text and Hex viewers). When you select this command you will see the dialogue box as on fig 1-6.

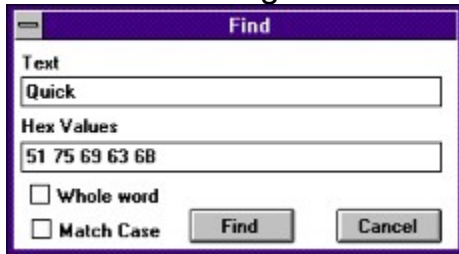


Fig 1-6

In the top box you can type the Text for search, in the Bottom box you can type Hex Pattern for search, when you type in one of the box, the content of other box will change too accordingly. Also you can adjust finding, by checking whole word, and match case check boxes. To begin searching press "Find" and the searching process will begin. When the matched pattern will be founded, it will be marked by colour (Default is Yellow).

**Continue:**

This command continues searching match text from the last found position.

**Wrap Lines:** This command very useful for viewing the Microsoft Word files. It cut right part of long strings and shows it on next line.



